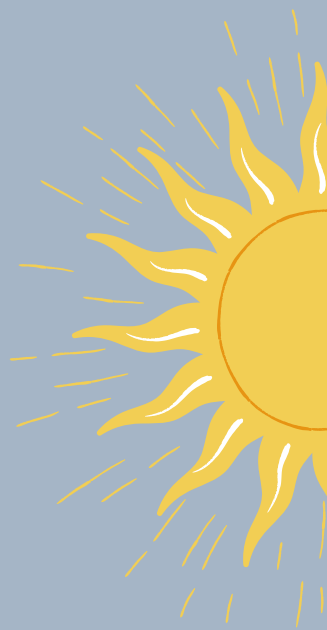


Cookie phases of the Moon

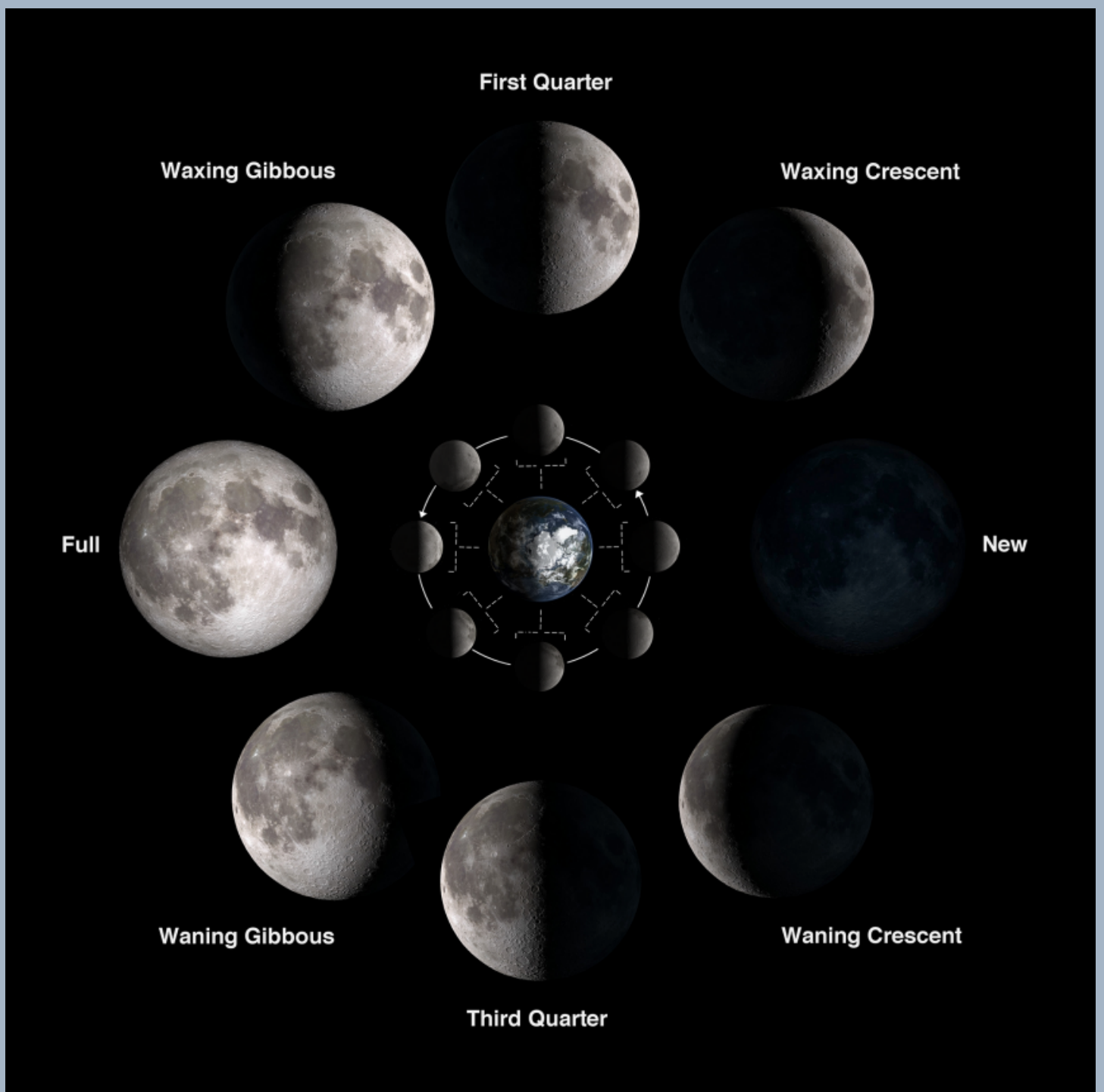
night



day



The Moon is a beautiful and mysterious body that orbits the Earth and moves through different phases that are repeated every 29.5 days.



Materials

- Chocolate cookies with cream filling (such as Oreos)
- Spoon

Directions

1. The phases of the Moon include a new moon, waxing crescent, first quarter, waxing gibbous, full moon, waning gibbous, last quarter and waning crescent.
2. Separate the cookies so the center cream is exposed.
3. Carve a phase of the Moon in the center cream of 1 cookie with the toothpick.
4. Once you are finished carving the cream center, place your "moon" on the moon chart you created.
5. After you finish all the phases, make sure to show off your creation before you eat it!